



AUBURN - CORD and DUESENBERG

REVIEW OF ORIGINS AND

OWNER \_\_\_\_\_ ACD CLUB

APPARENT ORIGINS

SERIAL #	<u>5855 E</u>	PRES
FRAME #	<u>4855</u>	FRAM
YEAR - MODEL	<u>1932</u> , <u>*-100</u>	RESI
BODY BUILDER	<u>Union City Body Co.</u>	RE-1
BODY STYLE	<u>Boattail Speedster</u>	BOD
BODY #	<u>Not found</u>	BOD
ENGINE #	<u>GU 71104</u>	ENG
S/C ORIG.?	<u>N/A</u> , # <u>---</u>	S/C
EXT. EXHAUSTS	<u>N/A</u>	EXT
OTHER I.D.:	<u>Front axle I.D. and serial Nos. A 35725</u>	OTHI

HAS THIS CAR BEEN RE-BODIED OR CUSTOMIZED  
 NO ,  YES: \_\_\_\_\_

ACCORDING TO KNOWN RECORDS THIS CAR SEEMS TO OR, DOES NOT APPARENTLY QUALIFY

ADDITIONAL DATA IS REQUESTED FROM THE



# AUBURN-CORD-DUESENBERG CLUB VERIFICATION OF ORIGINALITY

the instructions and please use a typewriter to complete this form.

R: This car qualifies for Category:  #1;  #2;  #3.

THE Auburn Automobile CO. in the year 1932. The body was constructed in 1932

100 wheelbase 127" SPEEDSTER UNION CITY BODY CO body maker

N/A. Was supercharging installed originally by the factory? N/A, or installed later? N/A

Material: Steel, wood framing - original body since 19    

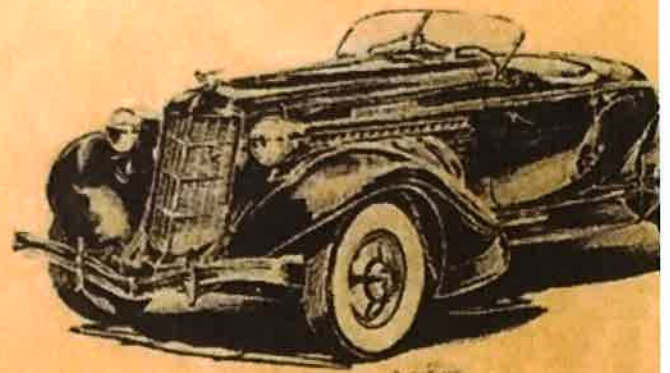
RS: List Serial Numbers of the Car, Engine, Body, Frame, Transmission, etc.

FRAME # 4855 Others:

TRANS. #     

S/C # N/A

71104



**VERIFICATION  
OF ORIGINS**

<b>A/C/D MAKE</b>	-- AUBURN AUTOMOBILE Co.	<b>BODY STYLE</b>
<b>MODEL SERIES</b>	-- 8-100	<b>BODY MAKE</b>
<b>SERIAL NUMBER</b>	-- 5855E, GU 71104, 4855	<b>BODY COLOR</b>
<b>ACD CLUB I. D. #</b>	-- A-152 – A CERTIFIED AUBURN	<b>OWNER NAME</b>